

A Quick Guide for setting up a HuddleCamHD NDI|HX camera

For use with HuddleCamHD cameras when using vMix or OBS

Network Setup Instructions

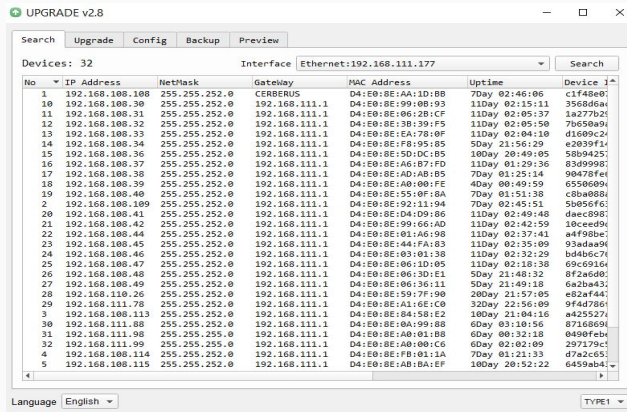
Using the IR Remote Control & UPGRADE TOOL

First connect your camera to the same network as your PC and turn them both on

Using the IR Remote press [*] + [#] + [4] to set your camera to DHCP mode

Next you will need to install the HuddleCamHD UPGRADE TOOL ([Windows](#) or [Mac](#))

Once installed and open click the **[Search]** button to discover the camera on your network



In the event that this is on a network without a DHCP server / router more in depth instructions to assist in network setup can be found [HERE](#).

Network Setup Instructions

Using only the UPGRADE TOOL

First connect your camera to the same network as your PC and turn them both on

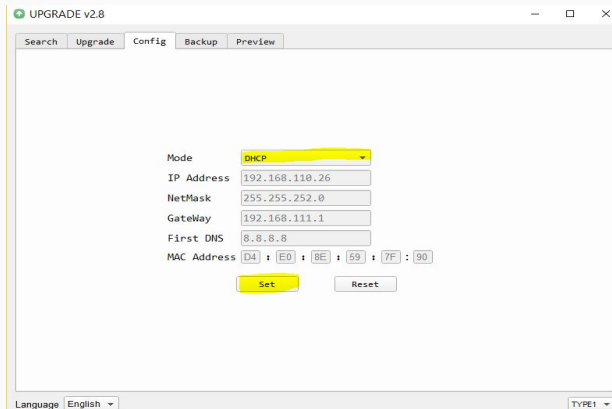
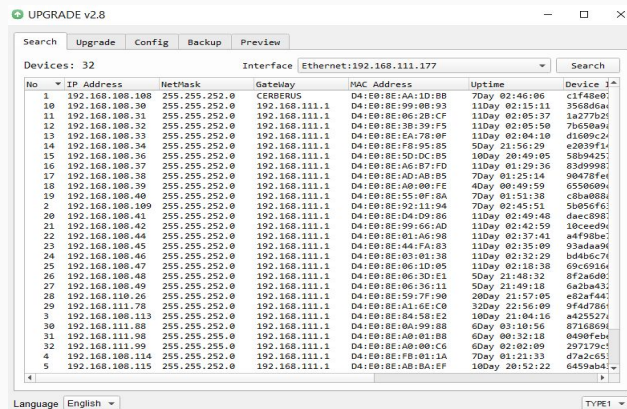
Next you will need to install the HuddleCamHD UPGRADE TOOL ([Windows](#) or [Mac](#))

Once installed and opened click the **[Search]** button to discover the camera

Right click on the camera's IP address and select **"config"**.

In the config section change the mode dropdown from manual to DHCP and click the **[Set]** button

Now return to the Search tab and click the **[Search]** button to discover the cameras new IP



In the event that this is on a network without a DHCP server / router more in depth instructions to assist can be found [HERE](#).

Adjusting the NDI Resolution and Frame Rate

Using the cameras IP address we discovered in the previous steps type it into a web browser

http://<camera ip>/

When prompted to login use the following default credentials

User: admin

Password: admin

Select the “**Video**” section to choose from some default NDI Presets for resolutions and frame rate. Make sure to click **[Apply]** and then reboot the camera after any adjustments you wish to commit.

Note: These settings can be further fine tuned based on your use case

The screenshot shows a web browser window with the address bar displaying '192.168.110.26'. The page has a blue background with a sidebar on the left containing navigation links: 'Live', 'Video' (highlighted in green), 'Image', 'Audio', 'System', 'Network', and 'Information'. Below these links are camera controls: 'Zoom In', 'Zoom Out', 'Focus In', 'Focus Out', 'Pan Speed', 'Tilt Speed', 'Zoom Speed', 'Focus Speed', and 'Auto Focus Unlock'. There are also buttons for 'Set', 'Call', 'Preset', and 'Back'. The main content area is titled 'Video Settings' and contains two sections: 'First stream' and 'Second stream'. Each section has settings for 'Encode Protocol', 'Resolution', 'Bit Rate', 'Frame Rate', 'I Key Frame Interval', 'Bit Rate Control', 'Fluctuate Level', 'Slice Split Enable', 'Split Mode', and 'Slice Size'. The 'First stream' settings are: Encode Protocol: H264, Resolution: 1920x1080, Bit Rate: 12288, Frame Rate: 25, I Key Frame Interval: 25, Bit Rate Control: CBR, Fluctuate Level: 1, Slice Split Enable: On, Split Mode: Fixed blocks, Slice Size: 64. The 'Second stream' settings are: Encode Protocol: MJPEG, Resolution: 640x360, Bit Rate: 2048, Frame Rate: 25, I Key Frame Interval: 25, Bit Rate Control: CBR, Fluctuate Level: 1, Slice Split Enable: On, Split Mode: Fixed blocks, Slice Size: 21. At the bottom right, there are 'Apply' and 'Cancel' buttons.

NDI Preset	NDI High Bandwidth Mode	NDI Low Bandwidth Mode
Ultra	3840x2160 @ 30 FPS	640x360 @ 30FPS
High	1920x1080 @ 60 FPS	640x360 @ 30FPS
Medium	1920x1080 @ 30 FPS	640x360 @ 30FPS
Low	1280x720 @ 60 FPS	640x360 @ 30FPS

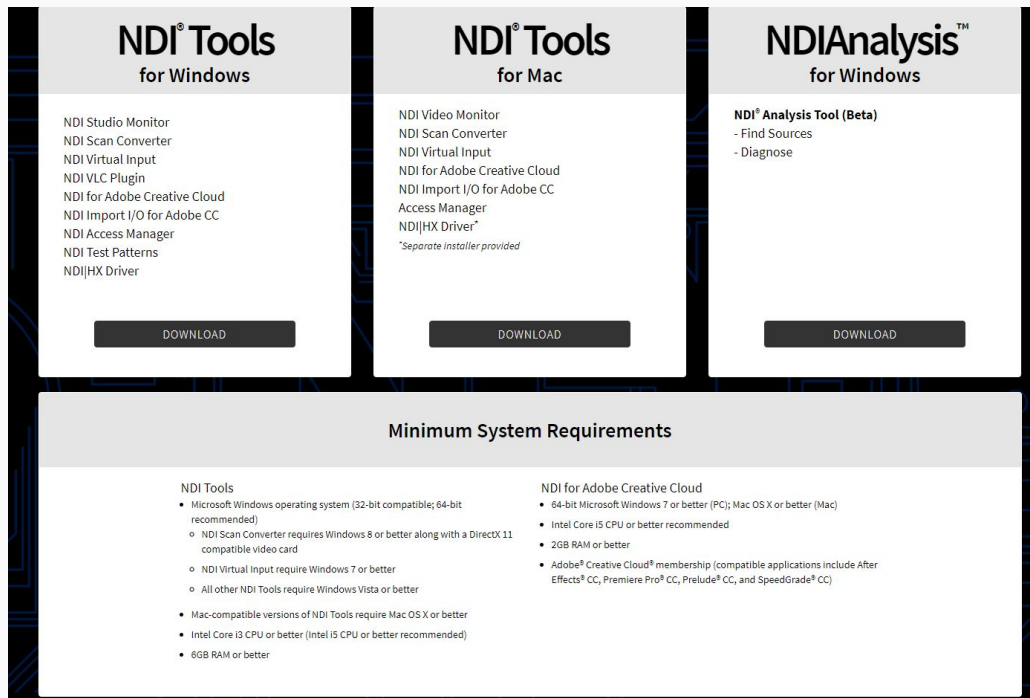
Acquiring NDI Tools to use NDI

The freely available NDI Tools are required to use NDI on your computer.

These tools can be acquired directly from NewTek [HERE](#).

Download and install the NDI Tools for your operating system making sure to restart after the installation has completed.

Note: For use with a Windows PC only the NDI tools are required. For use with a Mac PC both the NDI Tools and the NDI|HX driver must be installed.



NDI® Tools for Windows	NDI® Tools for Mac	NDIAnalysis™ for Windows
<ul style="list-style-type: none">NDI Studio MonitorNDI Scan ConverterNDI Virtual InputNDI VLC PluginNDI for Adobe Creative CloudNDI Import I/O for Adobe CCNDI Access ManagerNDI Test PatternsNDI HX Driver	<ul style="list-style-type: none">NDI Video MonitorNDI Scan ConverterNDI Virtual InputNDI for Adobe Creative CloudNDI Import I/O for Adobe CCAccess ManagerNDI HX Driver <p><i>*Separate installer provided</i></p>	<p>NDI® Analysis Tool (Beta)</p> <ul style="list-style-type: none">- Find Sources- Diagnose
DOWNLOAD	DOWNLOAD	DOWNLOAD

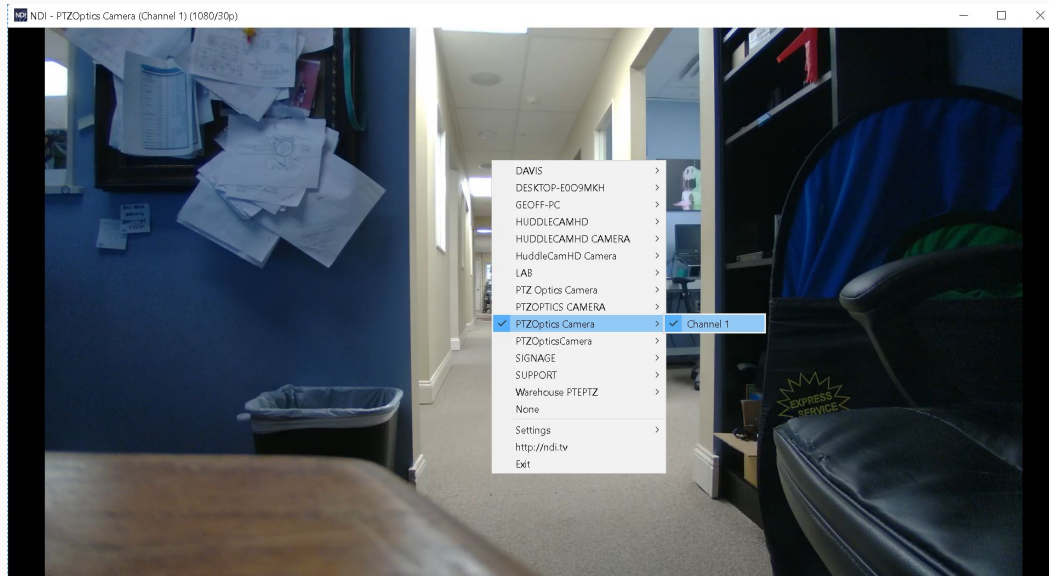
Minimum System Requirements	
<p>NDI Tools</p> <ul style="list-style-type: none">• Microsoft Windows operating system (32-bit compatible; 64-bit recommended)<ul style="list-style-type: none">◦ NDI Scan Converter requires Windows 8 or better along with a DirectX 11 compatible video card◦ NDI Virtual Input require Windows 7 or better◦ All other NDI Tools require Windows Vista or better• Mac-compatible versions of NDI Tools require Mac OS X or better<ul style="list-style-type: none">• Intel Core i3 CPU or better (Intel i5 CPU or better recommended)• 8GB RAM or better	<p>NDI for Adobe Creative Cloud</p> <ul style="list-style-type: none">• 64-bit Microsoft Windows 7 or better (PC); Mac OS X or better (Mac)• Intel Core i5 CPU or better recommended• 2GB RAM or better• Adobe® Creative Cloud® membership (compatible applications include After Effects® CC, Premiere Pro® CC, Prelude® CC, and SpeedGrade® CC)

NDI Tools to view NDI Sources

Included in the NDI Tools is an application called “Studio Monitor,” for Windows PCs, or “Video Monitor,” for Mac PCs.

For a Windows PC, launch “Studio Monitor” and right click on the viewing window to see discovered NDI sources, clicking to select and view the source.

For a Mac PC launch “Video Monitor” and go to the File option in your menu bar. Select a discovered NDI source to begin viewing.



Adding an NDI source into vMix

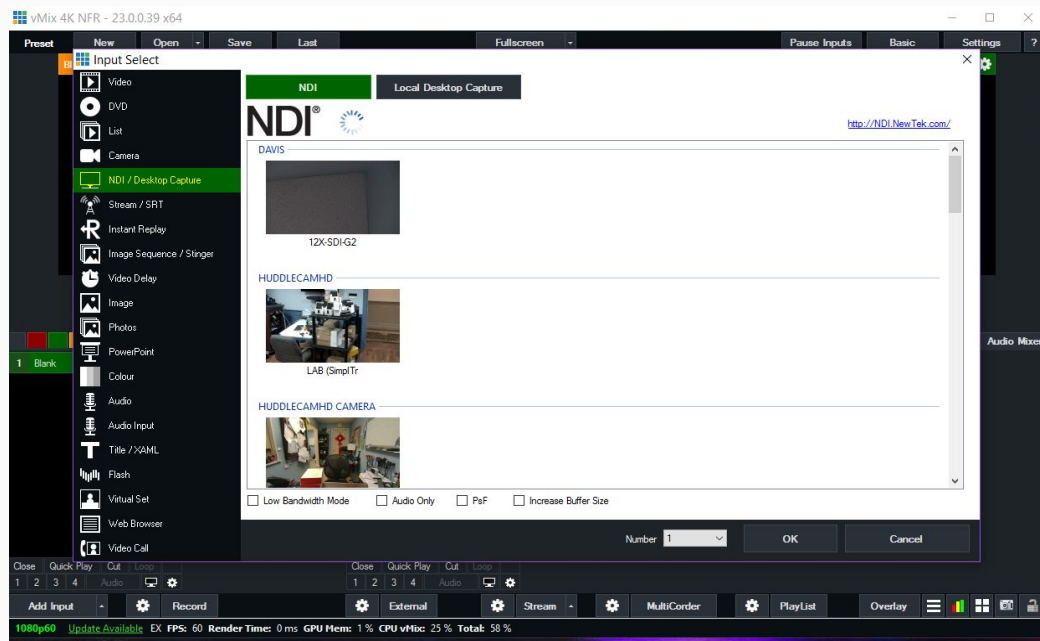
To use NDI within vMix you must first have NDI Tools installed on your Windows PC

Open vMix and click the **[Add Input]** button.

Navigate to the “NDI / Desktop Capture” option.

You should see the NDI source for your camera, select this source and click **[OK]**.

You should now see your NDI video in vMix



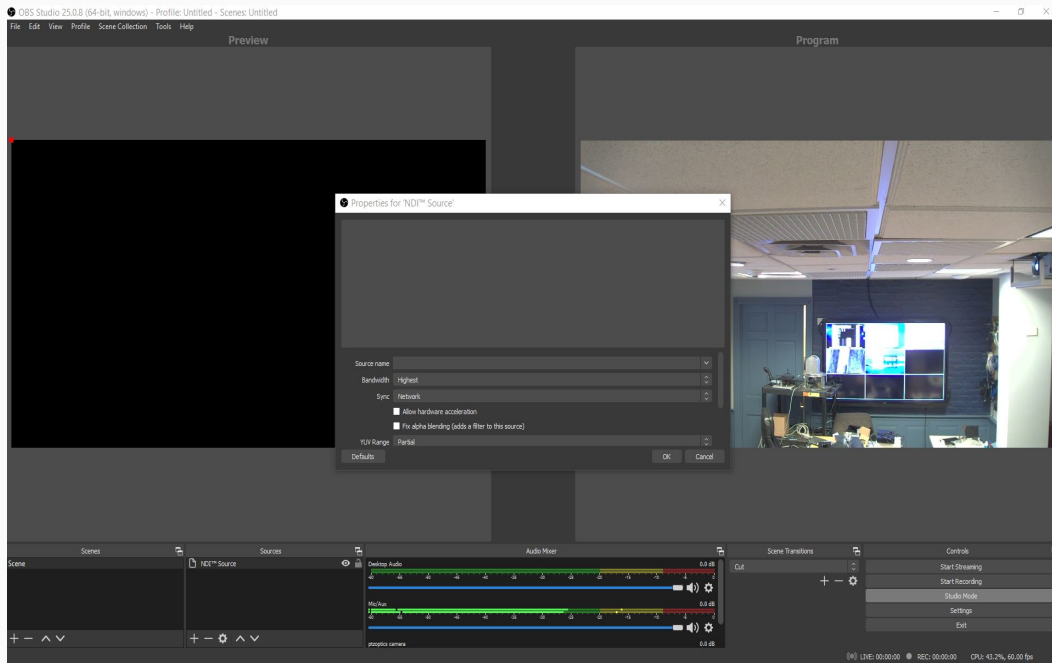
Adding an NDI source into OBS

To use NDI within OBS you must first have NDI Tools installed on your Windows PC and the OBS NDI Plugin that can be found [HERE](#)

Make sure OBS is closed during plugin installation

Once installed you click **[+]** to add an NDI source by selecting the NDI Source input option. Discovered NDI sources will be displayed in the “Source Name” drop down to select from.

Click the **[OK]** button to add the NDI source to your OBS production.



Have some additional Questions?

If you are having problems setting up your HuddleCamHD camera(s) please contact the HuddleCamHD Support for further assistance using one of the options below.

E-Mail Support

support@huddlecamed.com

Submit a Ticket

help.huddlecamed.com

Chat with Support

help.huddlecamed.com

Call Support

484-593-2584
800-486-5276 x.1004

HuddleCamHD support is typically available Monday through Friday
from 8:00 AM - 6:00 PM EST/EDT.